

NEW PRODUCT! RIGHT ANGLE DRIVE ADAPTERS



DESIGN FEATURES INCLUDE:

- Gears made of heat-treated alloy steel.
- Oil-impregnated sintered-bronze bearings.
- High grade lubricant for temperatures from -50 to +300 degrees Fahrenheit.
- Adapter cases of anodized aluminum.
- Shafts, fittings and tips are zinc-plated steel.

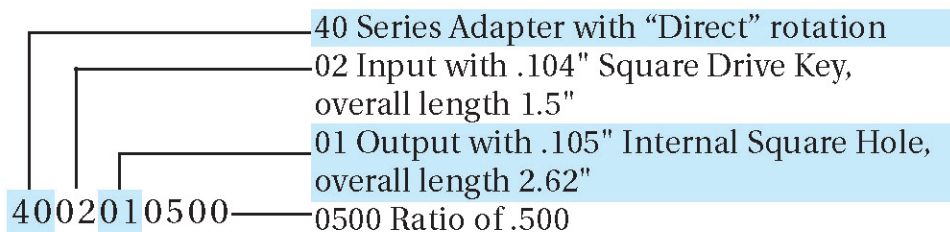
HOW TO ORDER FACTORY-BUILT ADAPTERS:

If OEM part number is known, see interchange beginning on page 20.

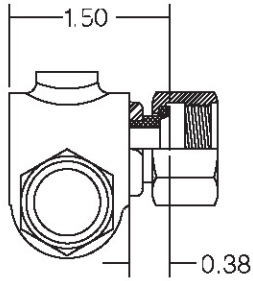
— OR —

1. Specify Series. Refer to drawings on previous page.
(Note arrows showing relative rotation of input and output).
2. Specify Input by referring to Input Chart on the following page.
3. Specify Output by referring to Output Chart on the following page.
4. Specify Ratio in terms of output for each revolution of input (for example 1:2 = .500 ratio). Refer to Gear Chart on page 11 for availability.

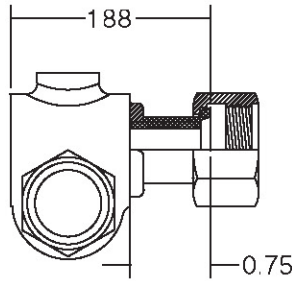
EXAMPLE: Part Number 4002010500 indicates the following:



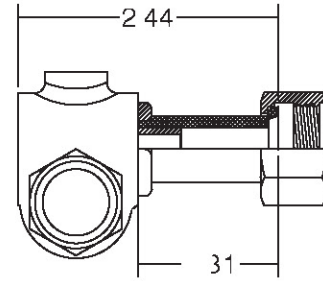
INPUT CHART



3/8" Connector
Fitting Nos. 01-05



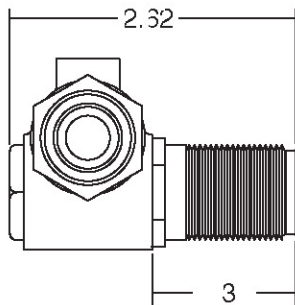
3/4" Connector
Fitting Nos. 09-17



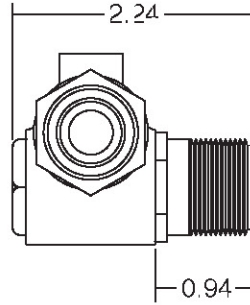
1 5/16" Connector
Fitting Nos. 18-22

Fitting Number	Description	Input Connector	Input Shaft	Drive Key	Snap Ring
01	3/8" Conn. & .181" Saw Slot Shaft	4002	4005		2006
02	3/8" Conn. & .104" Sq. Drive Key	4002	4005	4008	2006
03	3/8" Conn. & .152" Tang Drive Key	4002	4005	4018	2006
04	3/8" Conn. & .187" Tang Drive Key	4002	4005	4028	2006
05	3/8" Conn. & .203" Tang Drive Key	4002	4005	4038	2006
09	3/4" Conn. & .191" Saw Slot Shaft	4012	4015		2006
10	3/4" Conn. & .104" Sq. Drive Key	4012	4015	4048	2006
11	3/4" Conn. & .152" Tang Drive Key	4012	4015	4058	2006
12	3/4" Conn. & .187" Tang Drive Key	4012	4015	4068	2006
13	3/4" Conn. & .203" Tang Drive Key	4012	4015	4078	2006
14	3/4" Conn. & .150" Sq. Drive Key	4012	4015	4088	2006
15	3/4" Conn. & .124" Sq. Drive Key	4012	4015	4098	2006
16	3/4" Conn. & .193" Sq. Drive Key	4012	4015	4108	2006
17	3/4" Conn. & .150" Int. Sq. Drive Shaft	4012	4025		
18	1 5/16" Conn. & .161" Saw Slot Shaft	4032	4035		
19	1 5/16" Conn. & .191" Saw Slot Shaft	4032	4055		2006
20	1 5/16" Conn. & .150" Int. Sq. Drive Shaft	4032	4065		
22	1 5/16" Conn. & .203" Tang Drive Key	4032	4055	4078	2006

OUTPUT CHART



1 5/16" Connector
Fitting Nos. 01-05



15/16" Connector
Fitting No. 06

Fitting Number	Description	Output Connector	Output Shaft
01	1 5/16" Connector & .105" Int. Sq. Shaft	4003	4006
02	1 5/16" Connector & .150" Int. Sq. Shaft	4003	4016
03	1 5/16" Connector & .161" Saw Slot Shaft	4003	4026
04	1 5/16" Connector & .191" Saw Slot Shaft	4003	4036
05	1 5/16" Connector & .213" Saw Slot Shaft	4003	4046
06	15/16" Connector & .161" Saw Slot Shaft	4013	4056

GEAR CHART



Ratio*	Drive Teeth	Driven Teeth	Right Hand Gears 40 & 43 Series		Left Hand Gears 41 & 42 Series	
			Drive Part No.	Driven Part No.	Drive Part No.	Driven Part No.
0.250	3	12	4002501	4002502	4102501	4102502
0.467	7	15			4104671	4104672
0.500	7	14	4005001	4005002	4105001	4105002
0.550	11	20	4005501	4005502		
0.562	9	16			4105621	4105622
0.571	8	14	4005711	4005712	4105711	4105712
0.588	10	17			4105881	4105882
0.611	11	18	4006111	4006112	4106111	4106112
0.625	10	16	4006251	4006252		
0.636	7	11			4106361	4106362
0.647	11	17	4006471	4006472	4106471	4106472
0.667	10	15			4106671	4106672
0.687	11	16	4006871	4006872	4106871	4106872
0.705	12	17			4107051	4107052
0.714	10	14			4107141	4107142
0.733	11	15	4007331	4007332	4107331	4107332
0.750	12	16	4007501	4007502	4107501	4107502
0.769	10	13	4007691	4007692		
0.786	11	14	4007861	4007862	4107861	4107862
0.800	8	10			4108001	4108002
0.818	9	11	4008181	4008182	4108181	4108182
0.833	10	12	4008331	4008332	4108331	4108332
0.857	12	14			4108571	4108572
0.866	13	15	4008661	4008662	4108661	4108662
0.882	15	17	4008821	4008822	4108821	4108822
0.909	10	11	4009091	4009092		
0.923	12	13	4009231	4009232	4109231	4109232
0.929	13	14	4009291	4009292	4109291	4109292
0.937	15	16			4109371	4109372
0.941	16	17	4009411	4009412		
0.950	19	20	4009501	4009502		
1.000	10	10	4010001	4010001	4110001	4110001
1.055	19	18	4010551	4010552		
1.062	17	16	4010621	4010622		
1.077	14	13	4010771	4010772	4110771	4110772
1.100	11	10	4011001	4011002	4111001	4111002
1.134	17	15	4011341	4011342	4111341	4111342
1.167	14	12	4011671	4011672	4111671	4111672
1.200	12	10	4012001	4012002	4112001	4112002
1.214	17	14	4012141	4012142		
1.250	10	8	4012501	4012502	4112501	4112502
1.272	14	11			4112721	4112722
1.300	13	10	4013001	4013002	4113001	4113002
1.333	16	12			4113331	4113332
1.363	15	11	4013631	4013632	4113631	4113632
1.400	14	10	4014001	4014002	4114001	4114002
1.461	19	13	4014611	4014612		
1.500	15	10	4015001	4015002	4115001	4115002
1.583	19	12	4015831	4015832		
1.667	15	9	4016671	4016672		
2.000	14	7	4020001	4020002	4120001	4120002

*Note: Ratio equals number of Drive Teeth divided by number of Driven Teeth.

